



Friends of Semiahmoo Bay Society is a non-profit, stewardship group of volunteers working in conservation, education and restoration in Boundary Bay and the Fraser River delta.

www.birdsonthebay.ca

What Are We Doing?

Riparian Habitat Restoration Forage Fish Monitoring & Habitat Restoration, Eelgrass Mapping & Monitoring, Shorekeepers Marine Surveys, Nesting Box Monitoring Program and Community Outreach Programs and Events - Beach Hero Marine Interpretation, Birds on the Bay, School Programs & World Ocean Weekend Festival.

Check out our Georgia Basin Habitat Atlas: Boundary Bay, a unique window thru which to understand and appreciate Boundary Bay's geography, wildlife, sensitive habitats & its importance in the south Salish Sea.

Website: www.georgiabasin.net

Boundary Bay is a BC Wildlife Management Area, Important Bird Area (Birdlife International) and a Ramsar Site (United Nations).

It is critical to protect!

You can be involved – 604-536-2636

Email: information@birdsonthebay.ca



Thank you Project Partners and Volunteers!

Project funding generously provided by the Eve Bene Funds, White Rock & Surrey Naturalists Society (2002); Environment and Climate Change, Canada; Fisheries and Oceans Canada, BC Ministry of Community, Sport and Cultural Development; Vancity Envirofund; Vancouver Foundation; TD Friends of the Environment

Special thanks to Jessy Song for the translation to Mandarin.

Photo credits: M. Cuthbert, A. Prentice
Eelgrass Illustration: Dr. Sandy Wyllie-Echeverria
Boundary Bay Map: Anne Murray
Text: F.T. Short and S. Wyllie-Echeverria, Nikki Wright, Cynthia Durance, Port Townsend Marine Centre
Brochure: M. Cuthbert, J. Song

Sources of Information

Community Mapping Network
www.cmnbc.ca

E Flora / E Fauna Project
www.geog.ubc.ca/~brian/florae

The Friends of San Juans
www.sanjuans.org

Puget Sound Action Team
www.wa.gov/puget_sound

Seagrass Conservation Working Group
www.stewardshipcentre.bc.ca/eelgrass/index.html

Georgia Strait Alliance
www.georgiastrait.org

Washington Department of Fish and Wildlife
www.wa.gov/wdfw/fish/forage/forage.htm

Whatcom County Marine Resources Committee
<http://whatcom-mrc.wsu.edu/MRC/index.htm>

Port Townsend Marine Science Center
www.ptmsc.org

People for Puget Sound's Habitat Project
www.pugetsound.org/habitat/default.html

Fisheries and Oceans Canada, Pacific Region
www.pac.dfo.ca

Pacific Streamkeepers Federation
www.pskf.ca

Estuarine Research Foundation
www.erf.org

Native Plant Society of BC
www.npsbc.org

BC Nature, Federation of BC Naturalists
www.bcnature.ca

BC Spartina Working Group
www.spartina.ca



**Friends of Semiahmoo
Bay Society**

www.birdsonthebay.ca



The complex and intricate food webs of an eelgrass meadow rival the world's richest farmlands and tropical forests.

Eelgrass is not a seaweed... but

a flowering marine plant belonging to the seagrass family. Seagrasses evolved on land and migrated to the sea in relatively recent geologic times.

Of 11 species of eelgrass worldwide, 2 - the native *Zostera marina* and the introduced *Zostera japonica* - are in our local mudflats. The Greek word *zoster* means belt for the long, bright green, ribbon-like leaves.

Zostera is found in shallow, saline waters and sandy mudflats and is very light dependent. *Zostera's* extensive root system helps to stabilize mudflat beaches and prevent erosion of shorelines.

Eelgrass beds are an emerald ribbon found intertidally to about 50 feet deep. This zone contains the most diverse and abundant fauna of all of Boundary Bay.

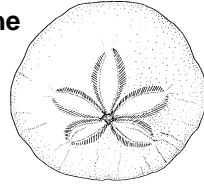
Eelgrass is a marine food factory!

Eelgrass is very efficient at converting solar energy into plant tissue and concentrating numerous elements that occur only sparingly in the sea. With its high productivity and rapid growth, eelgrass forms the food base for fish, shellfish and waterfowl in shallow seas. From predator to increasingly large predator the food chain that began with eelgrass ends on our dinner tables.

Eelgrass blades support a coating of diatoms to which bacteria and other algae are then able to attach. This seemingly insignificant "brown felt" is of immense importance to grazers that feed many larger organisms.



Eelgrass blades offer surface area for over 350 species of macro-algae and 91 species of micro-algae. Eelgrass detritus provides the food for consumers in the open ocean as deep as 10,000m.



Waterfowl, juvenile salmon & herring, jellyfish, shellfish, shrimp, crab, sea stars, moon snails, sand dollars, sea urchins, diatoms, nematodes, sponges, bryozoans, annelids and flatworms (124 species of invertebrates) find protection and food in eelgrass meadows.

The eelgrass nudibranch, limpet and bay pipefish, a seahorse relative, require eelgrass habitat to survive.

It has been estimated that seagrasses account for 34% of benthic global oxygen production—the air you breathe.

Eelgrass beds are important nursery and spawning sites for herring, lingcod, rockfish, salmon and home to Dungeness crabs. 80% of commercially important fish and invertebrates are dependent on eelgrass for part of their life.

Discovery of Eelgrass Importance

In the 1930s, along the Atlantic coast, a naturally occurring marine slime mold spread throughout eelgrass meadows resulting in its near disappearance. The exact cause is unknown.

Almost immediately birds, fish and shellfish disappeared. The oyster industry was ruined; fisheries were closed. Beaches and sandbanks eroded away. The economic ramifications were in the millions of dollars. It took many decades for eelgrass beds to recover and some never have.

Worldwide eelgrass is in decline.

Photosynthesis is most important in June and July when eelgrass stores energy. Disturbance and shading impacts should be avoided at this time.

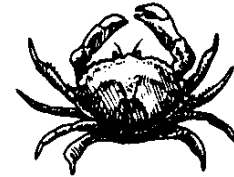
15% of the world's total seagrass areas have been lost. The trend towards habitat degradation continues as population increases in coastal regions.

Dredging removes the entire ecosystem; it also poses one of the greatest threats to eelgrass by suspending silt that blocks light on which *Zostera* depends, causing beds to fragment or even disappear.

Docks create shading problems. Boat anchoring in an eelgrass meadow can disturb the rhizomes, while boat propellers cut eelgrass blades in shallow water.

Pollution increases growth on eelgrass blades blocking the sun which it needs to survive. Herbicide runoff can kill or damage eelgrass plants.

Digging activities, such as shellfish harvesting, clamming and sandcastle building can damage sensitive underground roots called rhizomes and destroys invertebrates.



Under the federal Fisheries Act, "fish habitats" are defined as those parts of the environment on which fish depend, directly or indirectly, in order to carry out their life processes. The Act also defines "fish" to include all the life stages of "fish, shellfish, crustacean, marine animals and marine plants". Fisheries and Oceans Canada's long-term policy objective is the achievement of an overall net gain of the productive capacity of fish habitats. The "no-net loss" principle guides the department to balance unavoidable habitat losses with habitat replacement on a project-by-project basis.



The Boundary Bay Area

Five rivers, numerous creeks, estuaries, salt marshes, mudflats, and **expansive eelgrass beds** encircle **Boundary Bay**, part of the globally significant Fraser River Delta.

It exceeds global, continental and national standards for the diversity & numbers of birds it supports, over 333 species, some rare and endangered. It is the top rated Important Bird Area in Canada of 600 sites. The Fraser River Delta is globally recognized as a "Hemisphere Reserve", a critical link on the Pacific Flyway for migratory shorebirds needing protection.

Boundary Bay provides critical habitat for salmon, herring, coastal cut-throat trout, flounder & sole & Grey whales frequent the bay during their spring migration.

Great Blue Heron nesting colonies are present & they forage for fish among the eelgrass beds year round.

